

SafeSeal_{Rx}TM By...

STAHL'S
Hotronix

Heat Sealing Equipment



Heat Sealer

Operator's Manual

Safety Instructions

WHEN USING YOUR HEAT SEALER,
BASIC PRECAUTIONS SHOULD ALWAYS BE FOLLOWED,
INCLUDING THE FOLLOWING:

1. Read all instructions.
2. Use heat sealer only for its intended use.
3. To reduce the risk of electric shock, do not immerse the heat sealer in water or other liquids.
4. Never pull cord to disconnect from outlet, instead grasp plug and pull to disconnect.
5. Do not allow cord to touch hot surfaces, allow heat sealer to cool completely before storing.
6. Do not operate heat sealer with a damaged cord, or if the equipment has been dropped or damaged. To reduce the risk of electric shock, do not disassemble or attempt to repair the heat sealer, take it to a qualified service person for examination and repair. Incorrect reassembly or repair could cause a risk of fire, electric shock, or injury to persons when the equipment is used.
7. Close supervision is necessary for any heat sealer being used by or near children. Do not leave equipment unattended while connected.
8. Burns can occur when touching hot metal parts.
9. To reduce the likelihood of circuit overload, do not operate other high voltage equipment on the same circuit.
10. If an extension cord is necessary, then a 20 amperage rated cord should be used. Cords rated for less amperage may overheat, care should be taken to arrange the cord so that it cannot be pulled or tripped over.

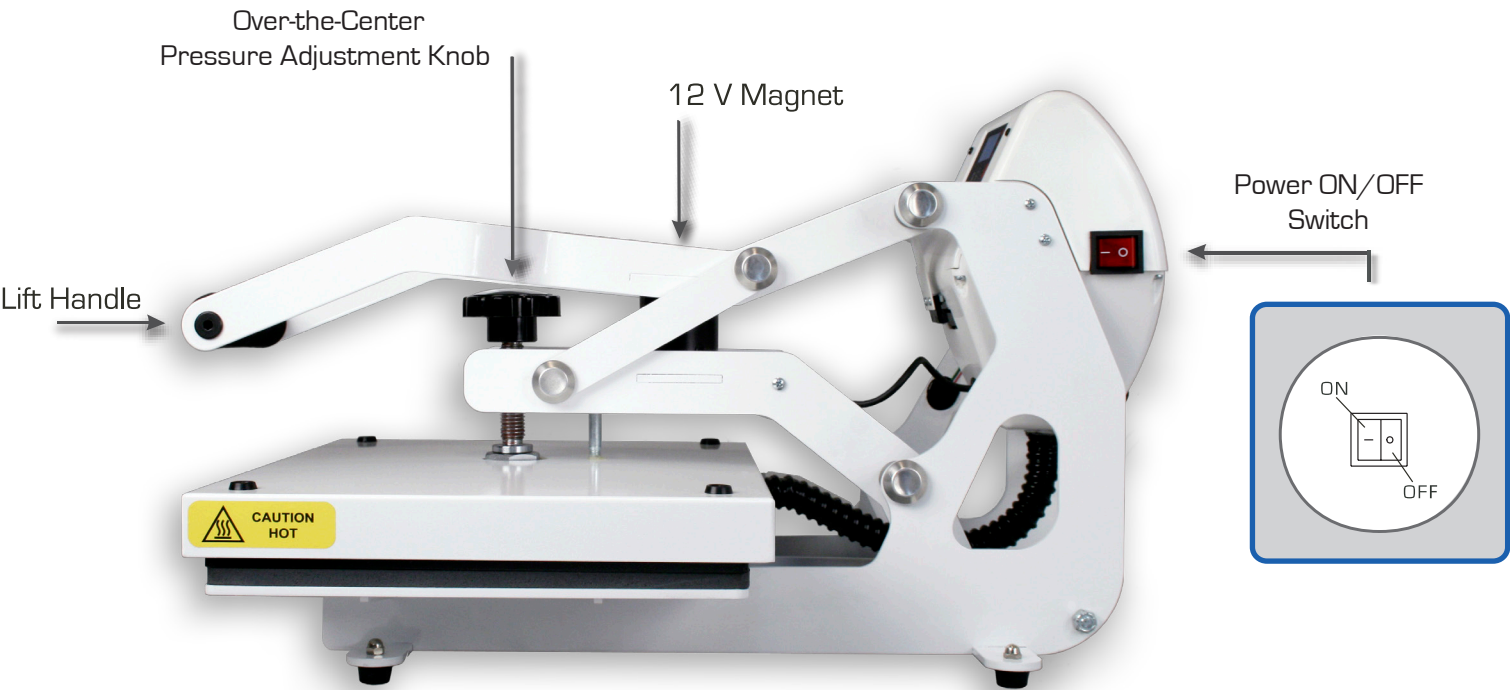
SAVE THESE INSTRUCTIONS

Table of Contents

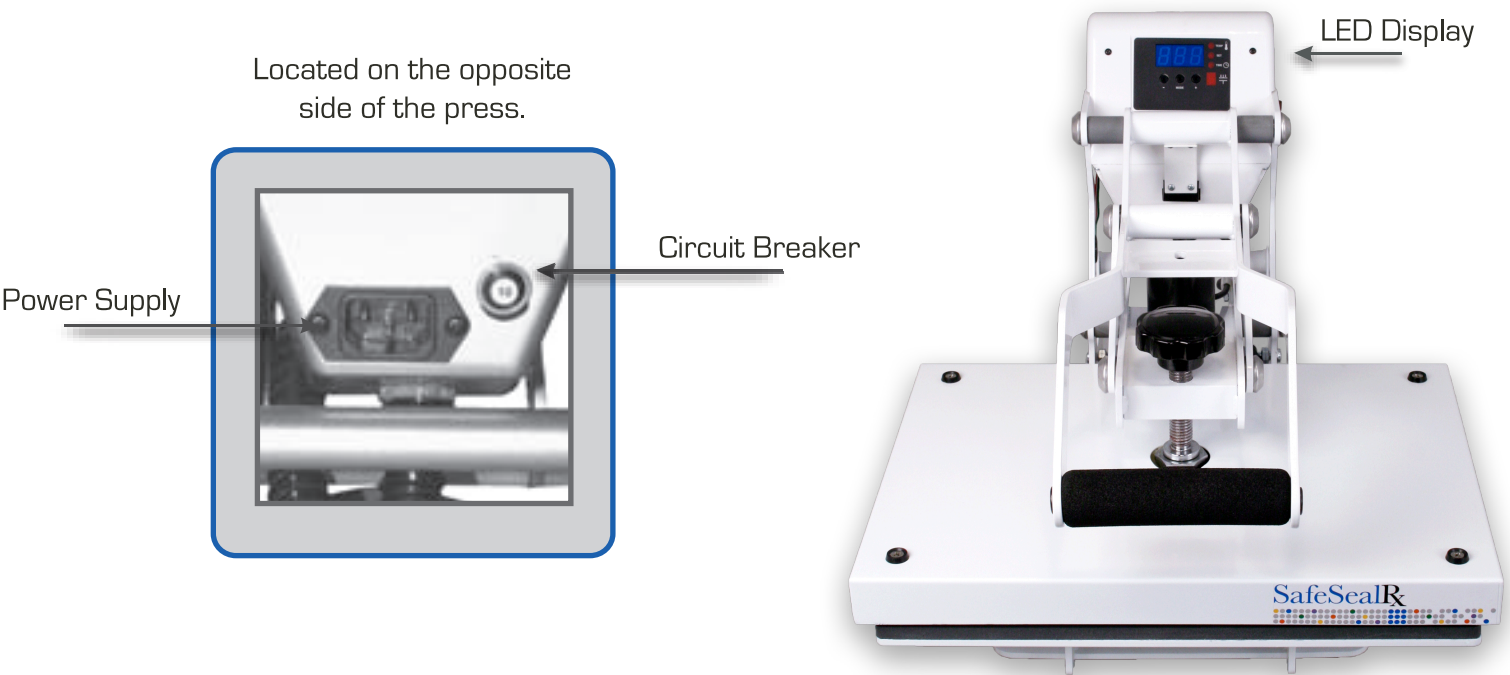
Machine View	4
Control Panel Guide	5
Operating Instructions	6-11
Connecting the System	6
Turning the System On	7
Adjusting the Temperature	8
Adjusting the Time	9
Adjusting the Pressure	10
Seal	11
Replacement Parts List and Location Guide	12,13
Electrical Schematic	14
Contact Information	15

Machine View

SIDE VIEW



FRONT VIEW



Control Panel Guide



Operating Instructions

SafeSealRX™ Heat Sealer

The SafeSealRX™ Heat Sealer Operating Instructions are designed with the user in mind. Carefully read and follow the step-by-step instructions for best results.



- To avoid burns, do not touch the heated platen during use.
- Keep hands clear of the upper platen of the press during platen lock down as the pressure may cause injury.
- Press should be placed on a sturdy, suitable stand at least 36"L x 24"W x 29"H.
- Work area must be kept clean, tidy and free of obstructions.
- Power supply cord must be disconnected before cleaning or servicing press.

Connecting the System

1. CONNECT THE POWER CORD:

- Connect the power cord into a properly grounded electrical outlet with a sufficient amperage rating.
- **VOLTAGE:** 120 Volt - The SafeSealRX™ Heat Sealer requires a full 15 amp grounded circuit for 120 volt operation.
240 Volt - The SafeSealRX™ Heat Sealer requires a full 7.5 amp grounded circuit for 240 volt operation.
- **EXTENSION CORDS:** If used, should be as short as possible and not less than 12 gauge. Heavy duty cords are recommended.
- **CIRCUITS:** that have less than 15 amps or that have other high demand equipment or heat presses plugged in should not be used.

NOTE: If the supply cord is damaged, it must be replaced by the manufacturer, its service agent or a similarly qualified person in order to avoid hazard. Use HSJ type, rated 250 V - 10 AMP for replacement

CAUTION: Failure to follow these instructions will cause:

1. Erratic controller functions. 2. Inaccurate displays and slow heat-up. 3. The circuit breaker to disengage.

Turning the System On

2. SWITCH THE SYSTEM ON: See the diagram below for switch placement.

- Locate the packaging bolt positioned on the top-center of the press.
Packaging bolt must be removed prior to turning press on or operating press.

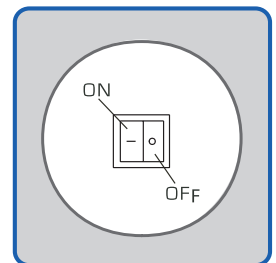


NOTE: Your SafeSealRX™ Heat Sealer is equipped with an Auto Sleep Mode. When the machine is not in use for a period of two hours, it will enter an energy saving sleep mode. To restore to normal operating mode, press any button on the display panel and allow the Heat Sealer to return to the target temperature.

- Now, locate the Power ON/OFF Switch on the side of the press, then turn the Power Switch to ON.



Power ON/OFF
Switch

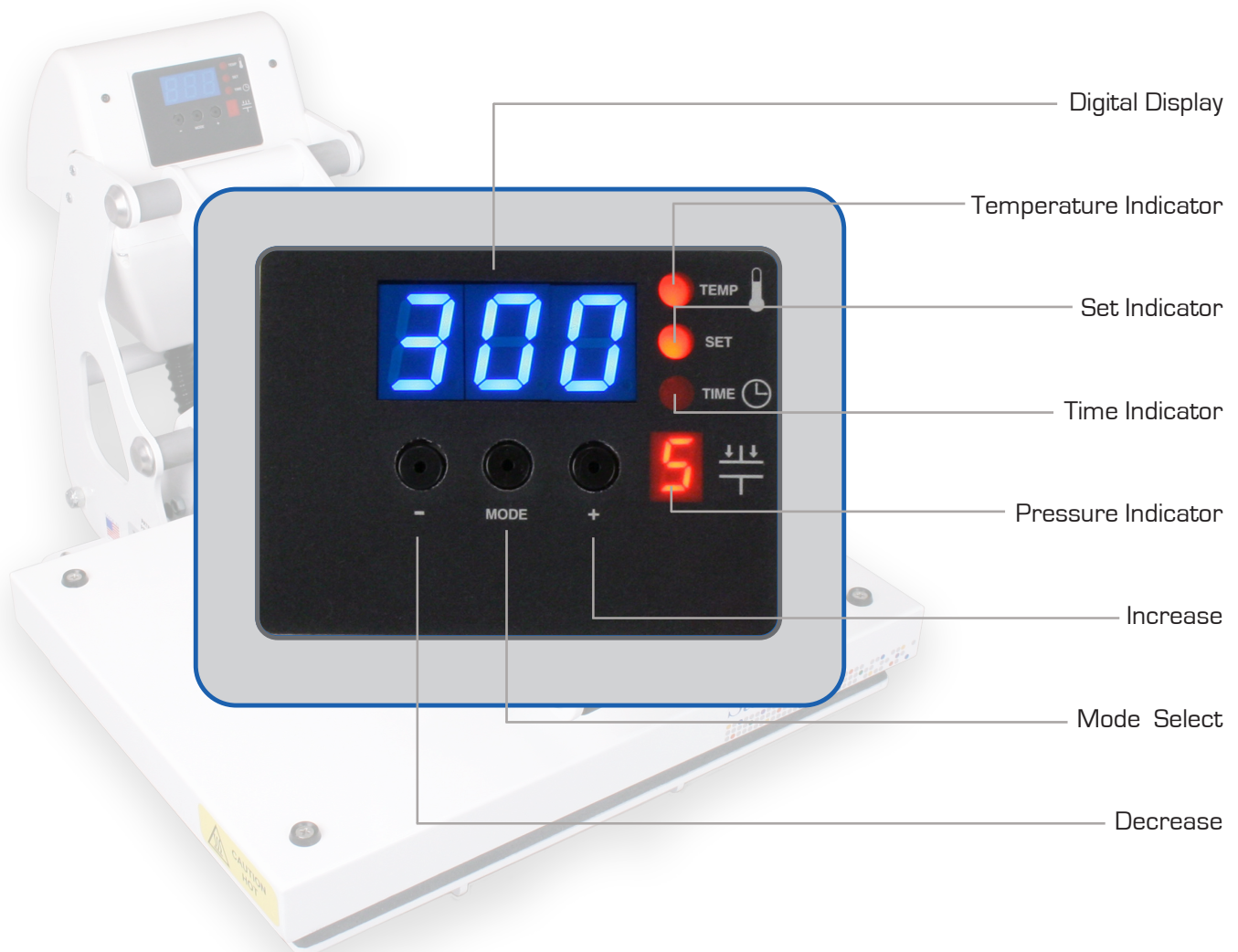


Adjusting the Temperature

3. ADJUST THE TEMPERATURE

- Locate the LED Display on the Press.
- Press the Mode Select button located in the center of the Control Panel.
The [SET] and [TEMP] lights located next to the display will illuminate indicating you are in the adjust temperature mode.
- Next, press the [-] button located to the left of the Mode Select button to lower the temperature setting, or press the [+] button located to the right of the Mode Select button to raise the temperature setting. The temperature can be set from 170°F [76°C] to 430°F [220°C].

The LED will display changes as you make them.



Adjusting the Time

4. ADJUST THE TIME

The SafeSealRX™ Heat Sealer has two time settings. This will allow you to set different times when a two step application is required. For single step applications, you simply set both time settings the same.

Once you have completed adjusting the temperature, press the Mode Select button again. This will advance you to the Time #1 Mode. The set and time lights will illuminate, indicating that you are in the Time # 1 Mode.

Adjust the time in the same manner that you adjusted the temperature. Once you have the Time # 1 set, push the Mode Select button again to advance to the Time # 2 setting. All three red LED lights will illuminate indicating that you are in the Set Time # 2 Mode. Select the desired time and push the Mode Select button again to exit the time settings. All lights will be off and the press will return to the print mode.

- Press the Mode Select button **ONCE** to advance to the Adjust Temperature mode.
- Press the Mode Selection button **A SECOND TIME** to advance to the Time #1 Mode.
- Press the Mode Select button **A THIRD TIME** to advance to the Time #2 Settings.
- Press the Mode Select button **A FOURTH TIME** to return to the Heat Up/Operating Mode.



Adjusting the Pressure

5. ADJUST THE PRESSURE

- First, locate the LED Display on the Press.
(See figure 1)

The Pressure Adjustment Knob is located in the center of the heat platen
(See figure 2)

- Adjust the pressure by turning the knob clockwise to increase pressure and counter clockwise to decrease pressure.

PRESSURE READOUT

A visual Pressure Readout is located on the lower right side of the LED Display. When the handle is locked into the Print Position, a pressure number will be displayed. Readout will be on a scale of 0 - 9. A 0 Pressure readout would indicate no pressure at all and 9 would indicate very heavy Pressure.
(See figure 1)

1 - 3 = Light Pressure
4 - 7 = Medium Pressure
8 - 9 = Heavy Pressure

To adjust the pressure, simply turn the Pressure Adjustment Knob to the right or clockwise to increase the pressure and to the left or counter clockwise to decrease the pressure. The readout will display the pressure when locked down in the print position.

REMEMBER: To allow for the thickness of your paddle when adjusting the pressure.

WARNING: STRUCTURAL DAMAGE CAUSED BY EXCESSIVE PRESSURE IS NOT COVERED UNDER THE LIMITED WARRANTY!



Figure 1

Pressure Readout

Over-the-Center
Pressure Adjustment Knob

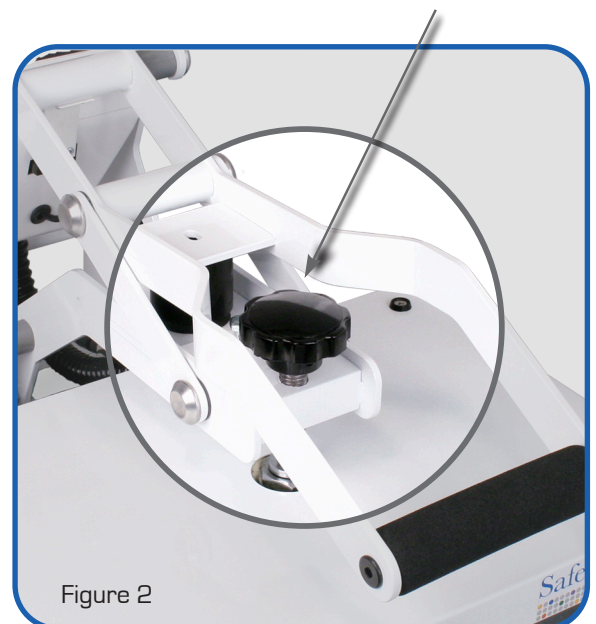


Figure 2

Seal

6. SEAL

- Once your equipment has reached the designated temperature, position the blister paddle and proceed to press.
- Lower and lock the heat platen into the press position. This procedure will start the automatic timing process.

The timer will automatically count down and lift the heat platen into the “UP” position when the press cycle is complete.

Note: Please be aware after time is complete, gas shocks will automatically release the platen into the “UP” position.

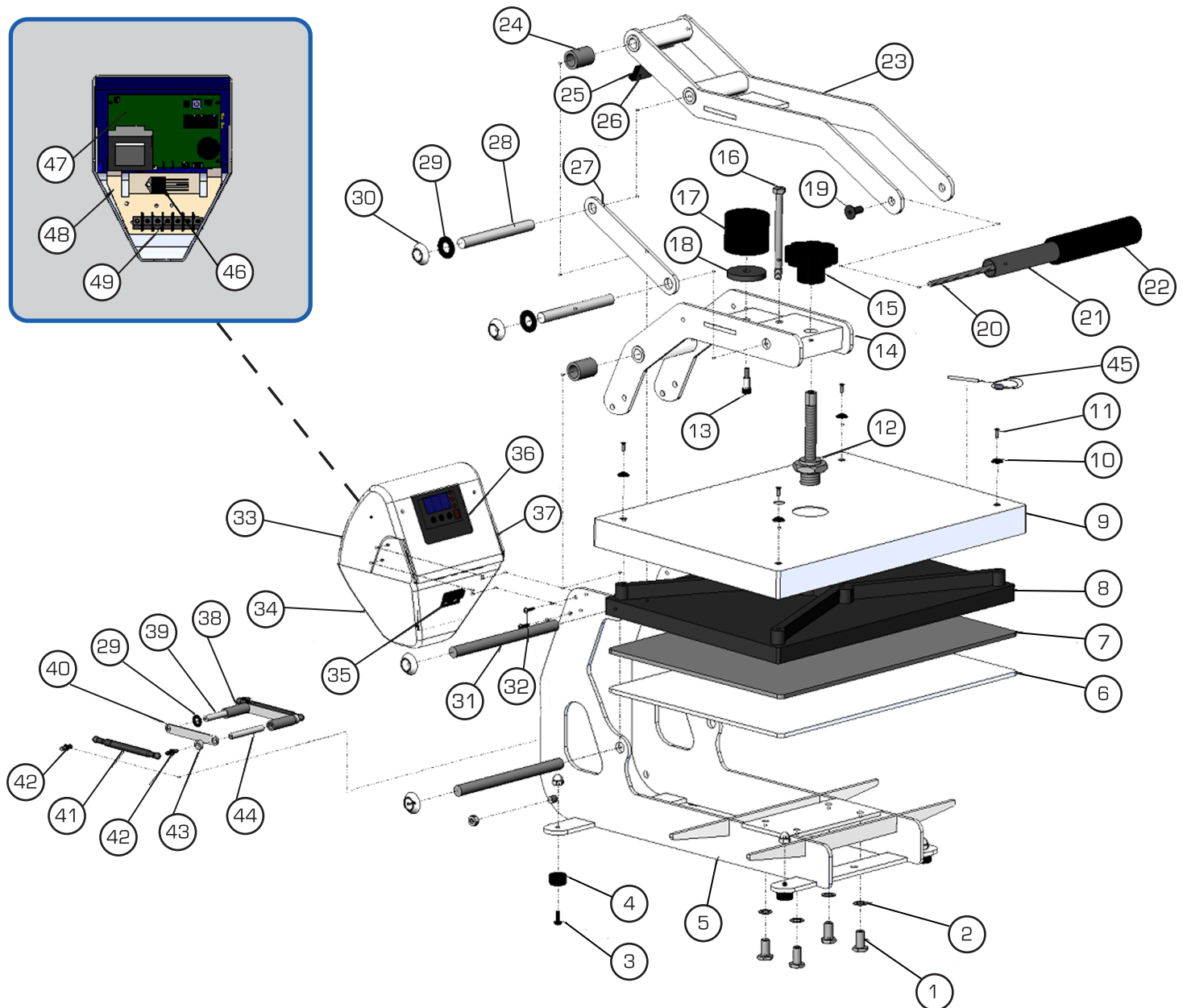
The time will automatically re-set and you are ready to continue with the next application.



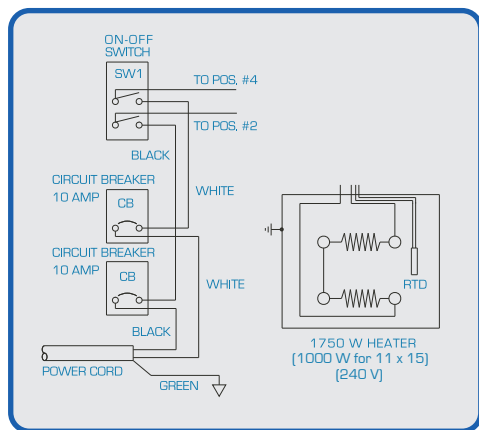
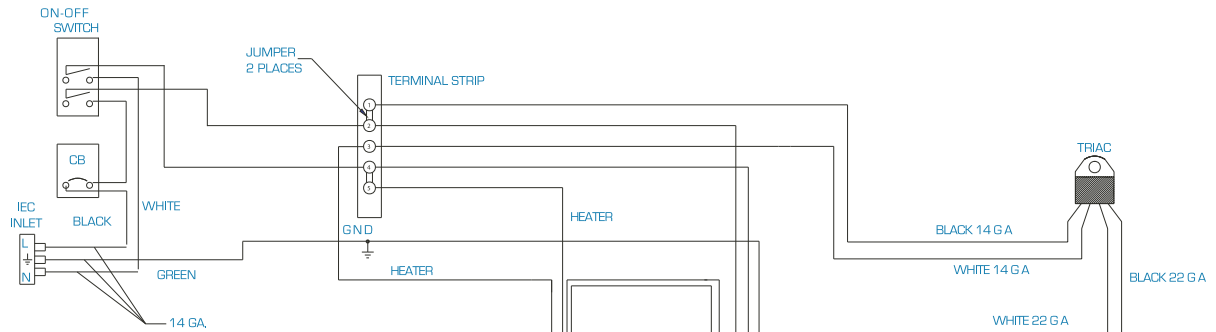
Replacement Parts List

Item No.	Part Name	Part Number	QTY.	
1	Hex Cap HD screw 1/4-20 x 1/2"	3-1011-11	4	Each
2	Lock Washer	2-1006-44	4	Each
3	Acorn Hex Nut	3-1011-182	4	Each
4	Rubber Foot	1-1256	4	Each
5	Safe Seal Base	Kit 3-6921	1	
6	Lower Platen	Kit 3-6922	1	
7	Silicone Pad 11 x 15 Gray	1-1875	1	
8	11x15 Heat Platen	3-1199	1	
9	Heat Platen Cover 11 x 15	3-1331	1	
10	Finish Washer	1-1063	4	Each
11	Cover Screw 10 -24 x 1/2"	3-1011-217	4	Each
12	Adjustment Spindle	2-1081	1	
13	Hex Soc HD Shoulder Screw 5/16" x 1/2"	3-1011-233	1	
14	Adjustment Arm Assembly	Kit 3-6920	1	
15	Pressure Adj. Knob	1-1012	1	
16	Safety Bolt 5/16" - 18 x 4 1/2"	3-1011-238	1	
17	Electromagnet	1-1945-1	1	
18	Silicone Pad 5/16" I.D. x 1 3/4" O.D. 1/4"	1-2133	1	
19	JCN Nut	2-1006-2	2	Each
20	All Thread Pin 1/4" - 20 x 4 3/4"	1-1042-1	1	
21	PVC Spacer 1/2" I.D. x 5"	1-2096	1	
22	Black Foam Grip	1-1540	1	
23	Handle Assembly	Kit 3-6919	1	
24	PVC Spacer 1/2" I.D. x 1.1"	1-2097	4	Each
25	Magnet	1-1219	1	
26	Magnet Bracket	1-2085	1	
27	Lift Link	KIT 3-6905	2	Each
28	Steel Pin 1/2" dia. x 4.38"	1-2093	2	Each
29	Nylon Washer	1-1048-3	6	Each
30	Hubcap 1/2"	1-1107-1	8	Each
31	Steel Pin 1/2" dia. x 6.45"	1-2094	2	Each
32	Phillips Pan HD Screw #6-32 x 1/2"	3-1011-152	4	Each
33	Housing STX11	4-1172	1	
34	Circuit Breaker	1-1331-2	1	
35	Proximity Switch	1-1211	1	
36	Display Overlay	1-2018-1	1	
37	On/Off Switch	1-2087	1	
38	PVC Spacer 1/2" I.D. x 2.48"	1-2098	1	
39	Threaded Pin 1/4" -20 x 3"	1-2091	1	
40	Bridle Links	Kit 3-6923	2	Each
41	Gas Spring 65 lb.	1-1874	2	Each
42	Ball Stud 10 mm	1-1939	4	Each
43	Steel Spacer	1-2114	2	Each
44	Threaded Pin 1/4" -20 x 3 5/8"	1-2092	1	
45	Probe	1-1272-1	1	
46	Triac	1-1059	1	
47	SSTT Control Board	1-2129	1	
48	Controller Bracket	2-1661	1	
49	Terminal Block	1-1290	1	

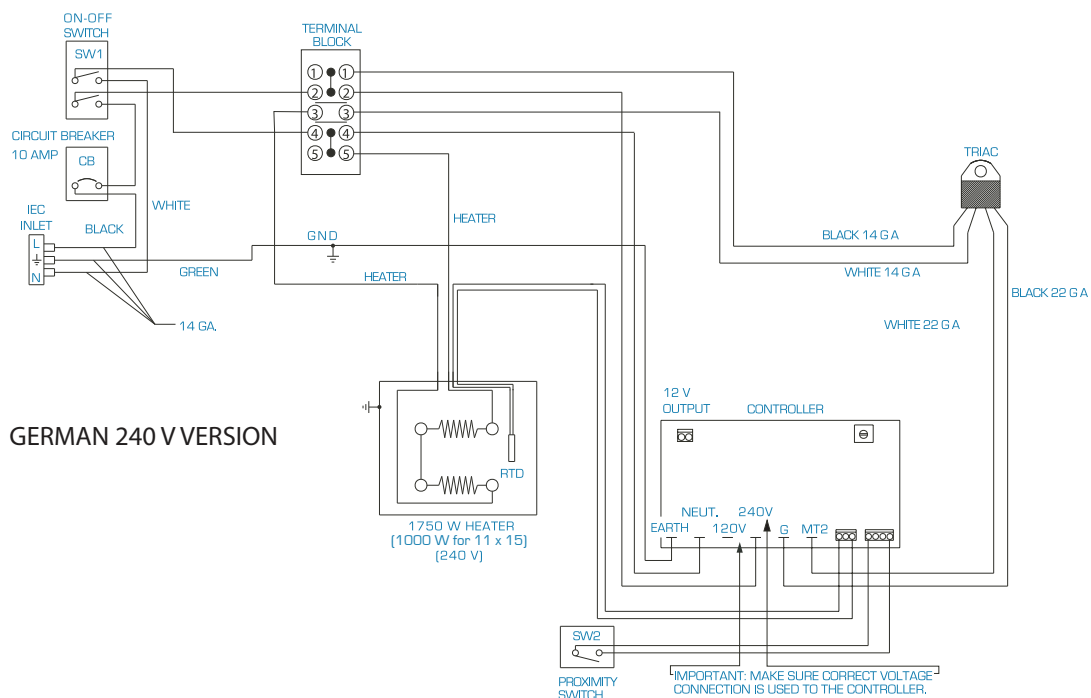
Parts Location Guide



Electrical Schematic



US 240 V VERSION





Contact Us

STAHL'S Hotronix®
One Industrial Park
Carmichaels, PA
15320
U.S.A.

Technical Support
hotronix.com/support
Monday - Friday
8am - 7pm EST

Customer Service
customerservice@hotronix.com
Monday - Friday
8am - 5pm EST

Replacement Parts
hotronix.com/locationspart

SafeSealRx™ By...
STAHL'S
Hotronix® 



A Prescription for Business Success!



One Industrial Park, Carmichaels, PA 15320, U.S.A

