

Included Parts:

1. Proximity Magnet (modified)

Required Tools:

2. Allen Wrenches (3/32" & 9/64")
3. Super Glue (cyanoacrylate)



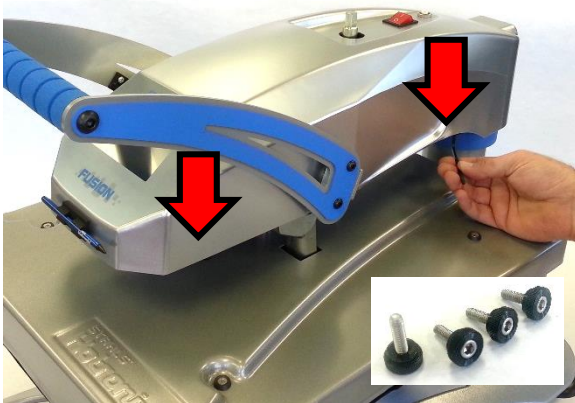
CAUTION: Detach power cord before proceeding



Lower heater but do not lock into place, such that it rests gently on lower platen



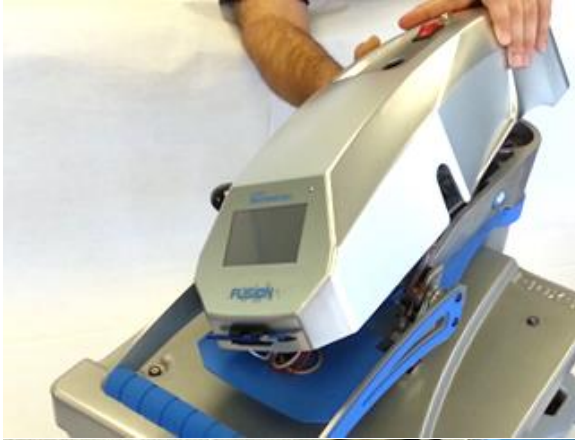
Loosen set screw in shaft of pressure adjustment knob and remove knob



Remove 4 #8-32 x 1/2" Thumb Screws (right 2 shown) from underside of control housing using 9/32" Allen Wrench



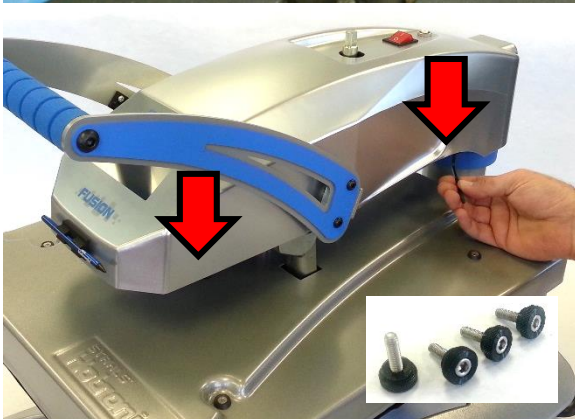
Lower handle to lock down press at light or medium pressure



Lift off control housing and lay it gently on left side of press



Attach modified Proximity Magnet to left Lift Linkage using Super Glue as shown and allow to dry



Replace housing onto press and insert 4 #8-32 x 1/2" Thumb Screws (right 2 shown), tightening with 9/32" Allen Wrench



Replace Pressure Adjustment Knob, aligning set screw with flat of shaft and tightening with 3/32" Allen Wrench



Raise handle into open position, plug in
press and turn ON to verify proper operation