

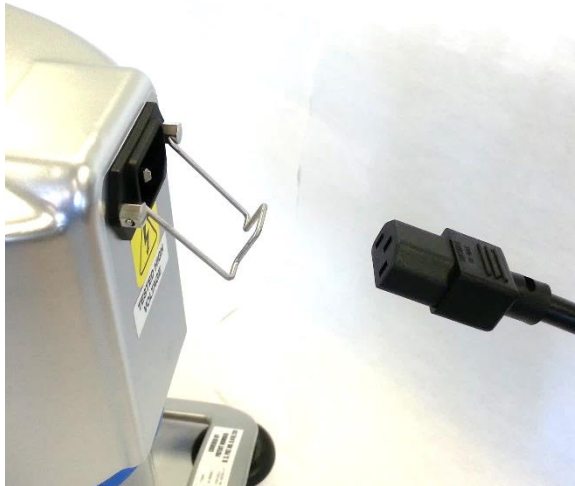


Included Parts:

1. Circuit Breaker with terminal screws, toothed washer and silver mounting ring (P/N: 1-1331)

Required Tools:

2. Pliers
3. #2 Phillips Screwdriver
4. Allen Wrenches (3/32" & 9/32")



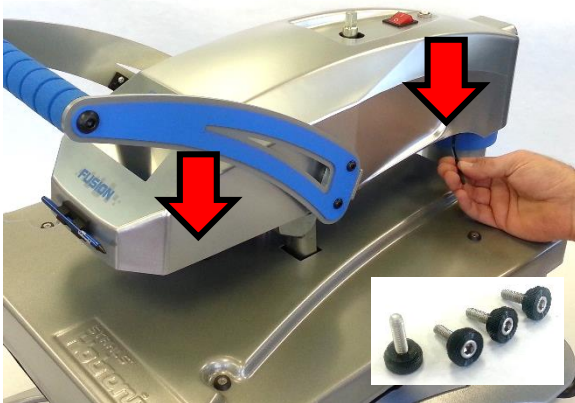
CAUTION: Detach power cord before proceeding



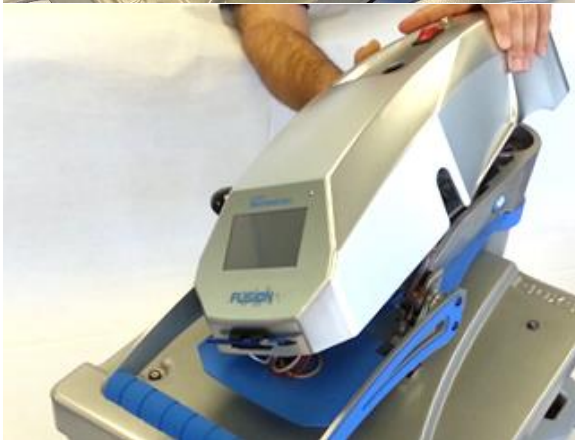
Lower heater but do not lock into place, such that it rests gently on lower platen



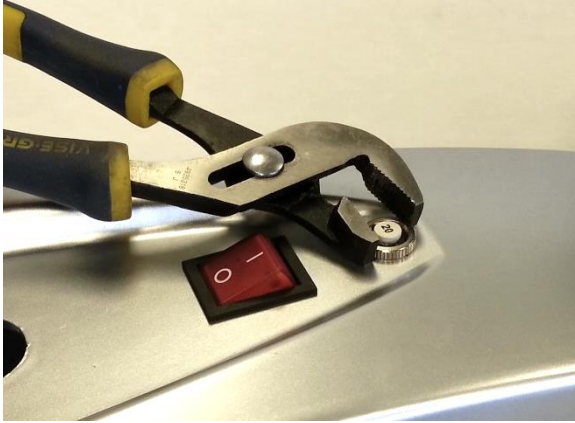
Loosen set screw in shaft of pressure adjustment knob and remove knob



Remove 4 #8-32 x 1/2" Thumb Screws (right 2 shown) from underside of control housing using 9/32" Allen Wrench



Lift off control housing and lay it gently on left side of press



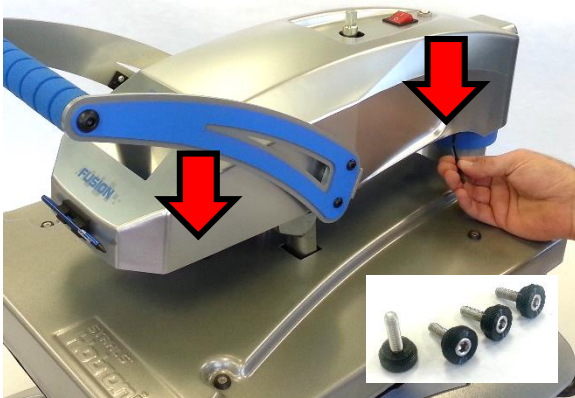
Remove silver mounting ring from circuit breaker using pliers if necessary, being careful not to damage the painted finish



Transfer wire terminals one at a time from old circuit breaker to new using #2 Phillips Screwdriver, noting terminal connections and circuit breaker orientation are correct as shown



Install toothed washer and silver mounting ring, noting amperage rating orientation as shown



Replace housing onto press and insert 4 #8-32 x 1/2" Thumb Screws (right 2 shown), tightening with 9/32" Allen Wrench



Replace Pressure Adjustment Knob, aligning set screw with flat of shaft and tightening with 3/32" Allen Wrench



Raise handle into open position, plug in press and turn ON to verify proper operation