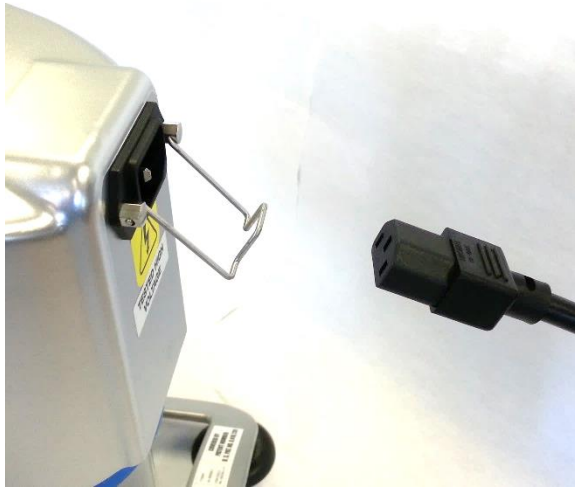


Included Parts:

1. Power Switch

Required Tools:

2. Allen Wrenches (3/32" & 9/32")



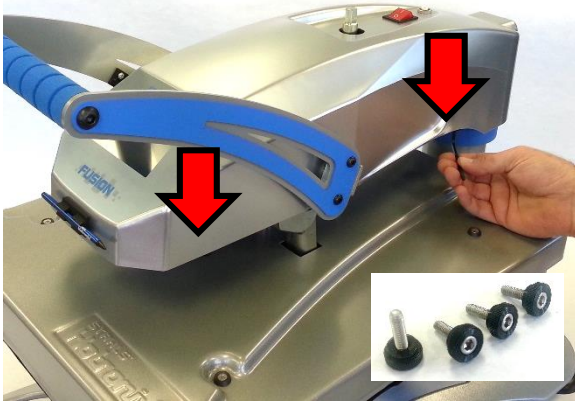
CAUTION: Detach power cord before proceeding



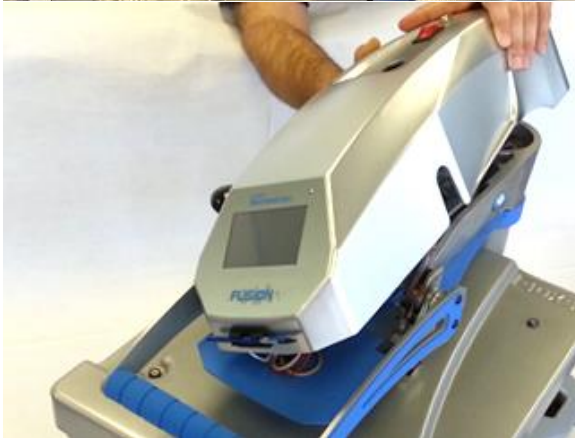
Lower heater but do not lock into place, such that it rests gently on lower platen



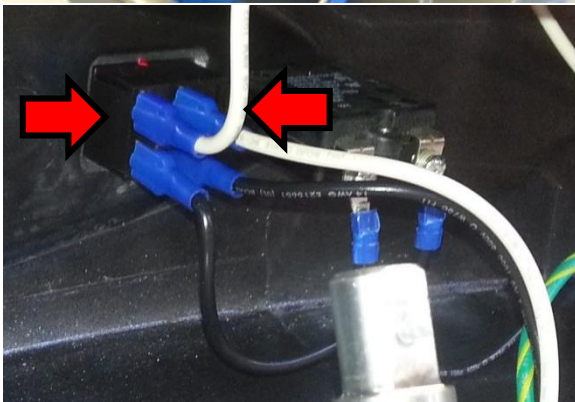
Loosen set screw in shaft of pressure adjustment knob and remove knob



Remove 4 #8-32 x 1/2" Thumb Screws (right 2 shown) from underside of control housing using 9/32" Allen Wrench



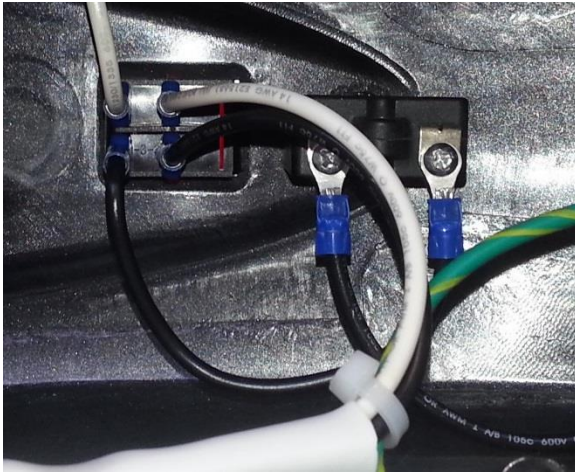
Lift off control housing and lay it gently on left side of press



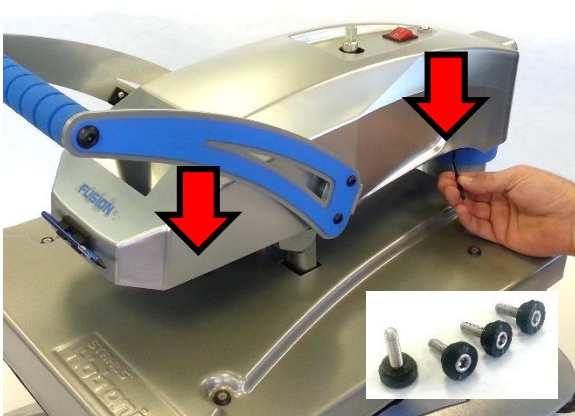
Squeeze retaining clips together to release switch from housing



Transfer wires from old Power Switch to new, one at a time to ensure each wire attaches to the correct terminal



Install new Power Switch into housing and confirm that wiring is correct as shown



Replace housing onto press and insert 4 #8-32 x 1/2" Thumb Screws (right 2 shown), tightening with 9/32" Allen Wrench



Replace Pressure Adjustment Knob, aligning set screw with flat of shaft and tightening with 3/32" Allen Wrench



Raise handle into open position, plug in press and turn ON to verify proper operation