

Included Parts:

1. Gas Spring
 - P/N 1-2243 for models STX20, STX20*, STX16
 - P/N 1-2246 for models STX11, STX6, STXC, MAXX15, MAXXC

Required Tools:

2. Flathead Screwdriver



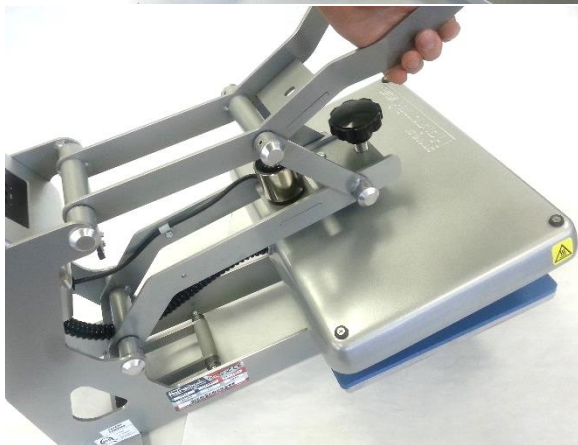
CAUTION: Detach power cord before proceeding



CAUTION: The full weight of the upper platen must be supported when Gas Springs are removed



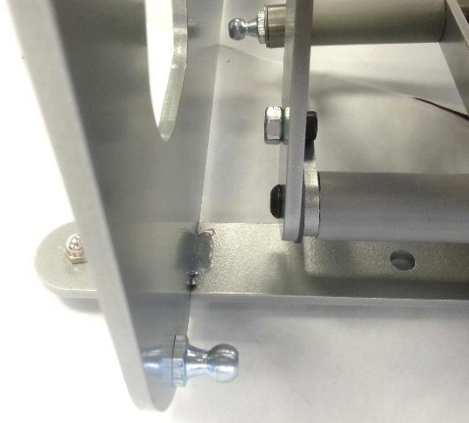
While holding lift handle up, gently pry old Gas Spring rear end off of its ball joint using Flathead Screwdriver as shown and repeat for other Gas Spring if necessary



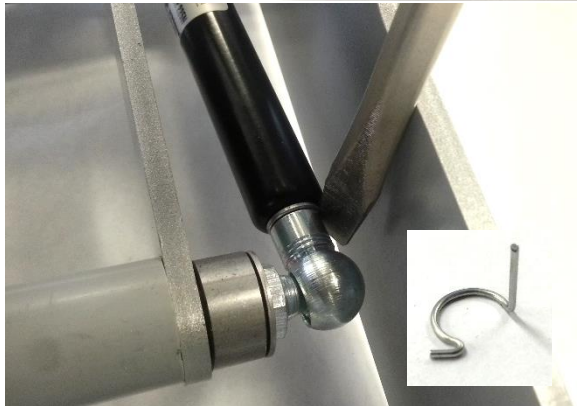
Lower handle to rest heater on lower platen



Gently pry old Gas Spring front end off of its ball joint using Flathead Screwdriver as shown and repeat for other Gas Spring if necessary



Remove old Gas Spring and discard

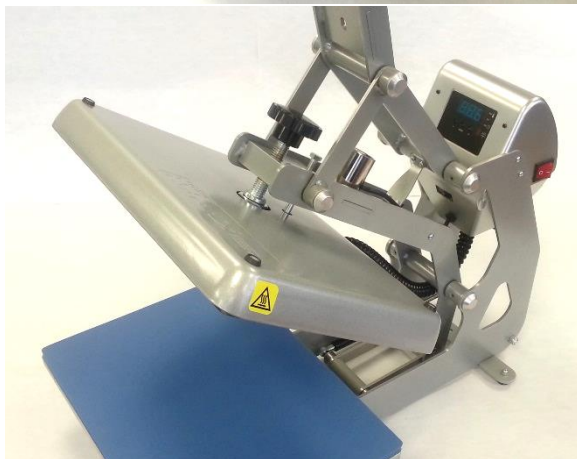


Install front end of new Gas Spring by snapping in place using Flathead Screwdriver, noting orientation as shown and repeat for other Gas Spring if necessary

NOTE: remove locking clips, if present



Lift up press and install back end of Gas Spring by snapping in place with fingers as shown



Operate lift handle up and down to verify proper operation of new Gas Springs