

**Included Parts:**

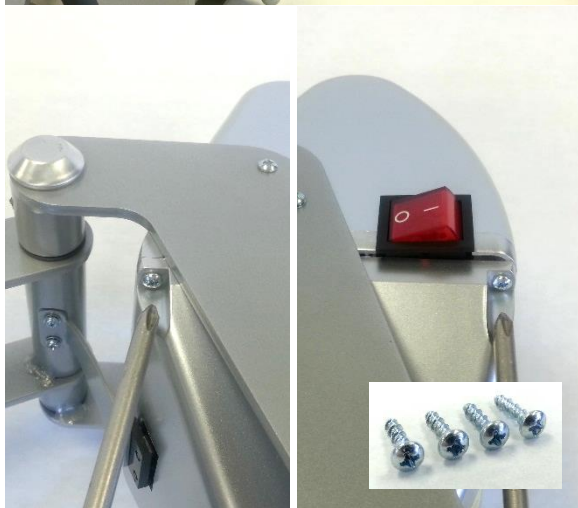
1. Electromagnet (P/N: 1-1945-1)

**Required Tools:**

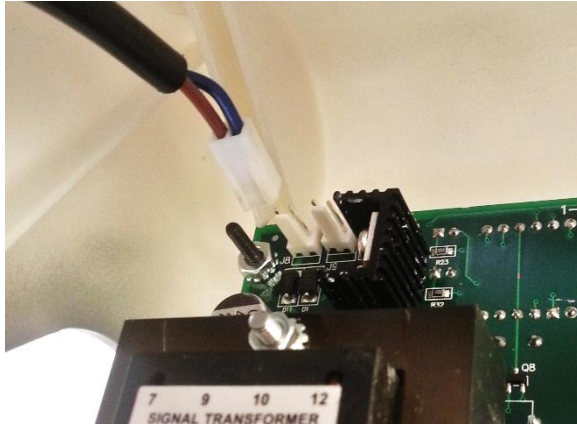
2. #2 Phillips Screwdriver
3. Allen Wrench (5/32")
4. Scissors



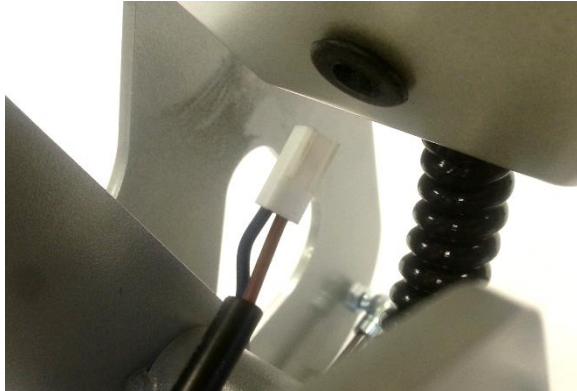
**CAUTION:** Detach power cord before proceeding



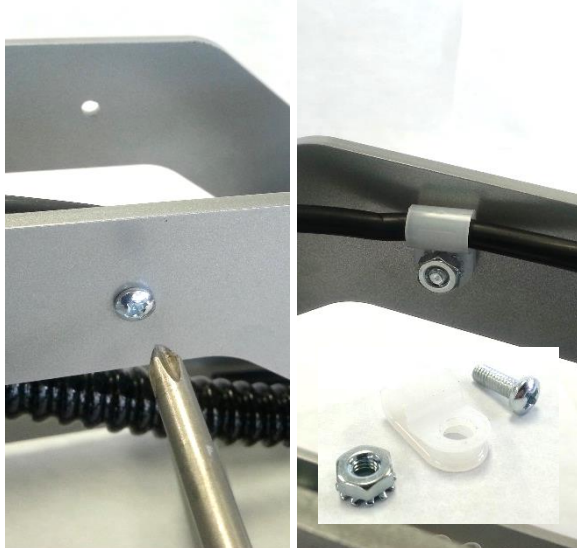
Remove 4x #6 x 1/2" Screws from control housing using #2 Phillips Screwdriver



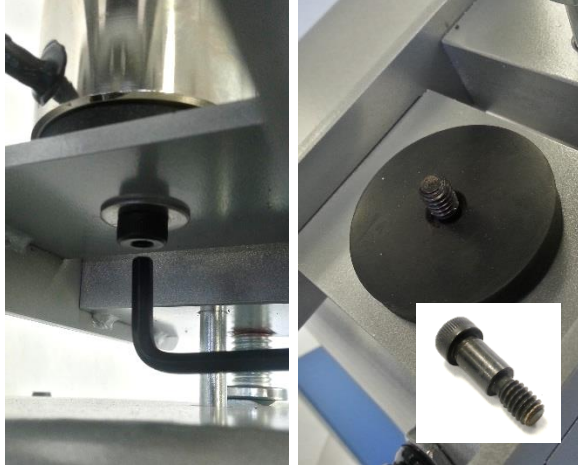
Unplug Electromagnet from Controller port  
P2 (newer models) or EM1 (older models)



Push cable through grommet in Controller  
Housing to remove



Unscrew Retaining Clip with #8-32 x 1/2"  
Screw and Nut using #2 Phillips Screwdriver



While holding 1/4"-20 x 5/16" D x 1/2" L" Shoulder Bolt still using 5/32" Allen Wrench, rotate old Electromagnet to unscrew

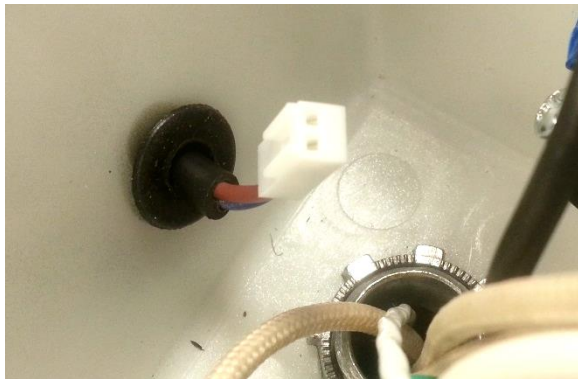


Cut zip tie holding wires together

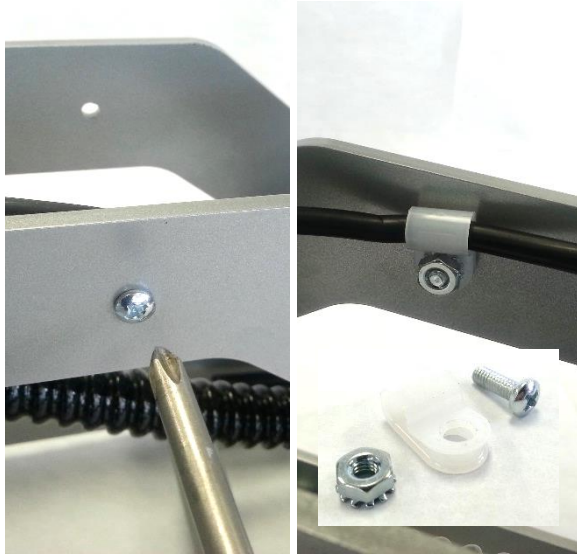


Install new Electromagnet by screwing into place while holding 1/4"-20 x 5/16" D x 1/2" L" Shoulder Bolt in place using 5/32" Allen Wrench

NOTE: Electromagnet should be cable end down as shown



Push new Electromagnet cable through grommet in Controller Housing



Install Retaining Clip with #8-32 x 1/2" Screw and Nut using #2 Phillips Screwdriver



Plug Electromagnet wires into Controller port P2 (newer models) or EM1 (older models)



Install top half of Controller Housing and secure by screwing in 4x #6 x 1/2" Screws using #2 Phillips Screwdriver



Plug in press and turn ON to verify proper operation